

UT IGERT External Advisory Committee Meeting | January 10, 2014

SOCIAL IMPACTS OF NATURAL GAS EXPLORATION IN TEXAS' COLONIAS

A. Christina Wirsching

Doctoral Program in Community + Regional Planning, 2016

MSCRIP 2011, BA in Geography (Secondary Sci Ed) 2005

Graduate Portfolio Program in Mexican American Studies

IGERT Trainee in Sustainable Energy + Smart Grids, 2014-2016

The University of Texas at Austin

Dissertation Chair: Prof. Bjørn Sletto, CRP

Committee: Prof. Robert Paterson, CRP

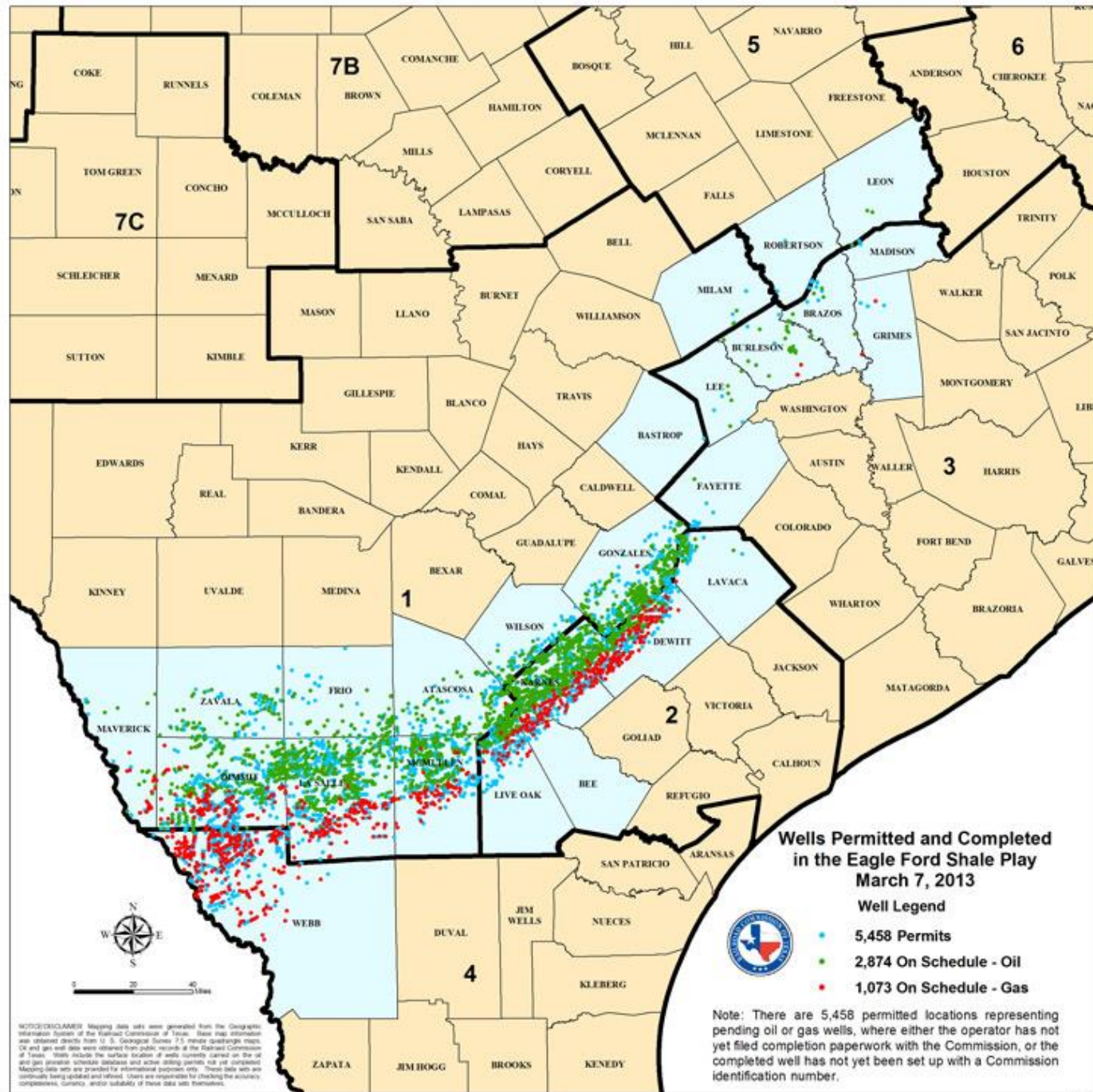
Prof. Elizabeth Mueller, CRP

Prof. Michael Webber, ME

Prof. Nicole Guidotti-Hernandez, AMS + CMAS

Eagle Ford Shale Play | Texas

- Second highest producing shale region of the country (EPA, 2013)
- One of top six producing oil and shale gas formations yielding 90% domestic oil and gas growth (EPA 2013)



Colonias



- Places of perpetual poverty, with substandard “self-help” housing and inadequate access to basic infrastructure for clean water, transportation, and electricity
- Unincorporated, mostly rural subdivisions/communities where planning ‘from the ground up’ is a necessity



OVERARCHING RESEARCH PROBLEM

- What is the role of planning in responding to site and local-scaled issues related to oil and gas extractive practices and policies, water appropriation and conservation practices, and property rights in unincorporated areas in Texas?

SPECIFIC RESEARCH QUESTIONS

- What are the everyday experiences of gas exploration in communities in the Eagle Ford Shale?
- How do EFS communities respond to the gas exploration?
- How does local, regional and state (US) planning practices, policies and politics influence the experiences of EFS communities?

RESEARCH APPROACH

Comparative Case Studies and **Mixed methods**

RESEARCH METHODS

Archival Research + Analysis

- Review of water and other state, regional, and local plans
- Review of newspaper and other media sources

Multi-sited Ethnography

- Ethnography with residents in communities in Eagle Ford Shale
- Interviews with company officials, government officials
- Participant observations of public meetings, caucus
- Observations of State of Texas 84th Legislature Session 2015

Spatial Statistical Analysis

- Acquire data of....
- GIS spatial statistical (proximity, autocorrelation) analysis using *Environmental Impact Assessment* and *Environmental Justice* analytical frameworks